

ADAM19 Antibody (internal region)
Peptide-affinity purified goat antibody
Catalog # AF4061a**Specification**

ADAM19 Antibody (internal region) - Product Information

Application	WB, E
Primary Accession	O9H013
Other Accession	NP_150377.1 , 8728
Reactivity	Human
Predicted	Pig, Dog
Host	Goat
Clonality	Polyclonal
Concentration	0.5 mg/ml
Isotype	IgG
Calculated MW	104997

ADAM19 Antibody (internal region) - Additional Information**Gene ID** 8728**Other Names**

Disintegrin and metalloproteinase domain-containing protein 19, ADAM 19, 3.4.24.-, Meltrin-beta, Metalloprotease and disintegrin dendritic antigen marker, MADDAM, ADAM19, MLTNB

Dilution

WB~~1:1000

E~~N/A

Format

0.5 mg/ml in Tris saline, 0.02% sodium azide, pH7.3 with 0.5% bovine serum albumin

Storage

Maintain refrigerated at 2-8°C for up to 6 months. For long term storage store at -20°C in small aliquots to prevent freeze-thaw cycles.

Precautions

ADAM19 Antibody (internal region) is for research use only and not for use in diagnostic or therapeutic procedures.

ADAM19 Antibody (internal region) - Protein Information**Name** ADAM19**Synonyms** MLTNB**Function**

Participates in the proteolytic processing of beta-type neuregulin isoforms which are involved in neurogenesis and synaptogenesis, suggesting a regulatory role in glial cell. Also cleaves alpha-2 macroglobulin. May be involved in osteoblast differentiation and/or osteoblast activity in bone (By similarity).

Cellular Location

Membrane; Single-pass type I membrane protein.

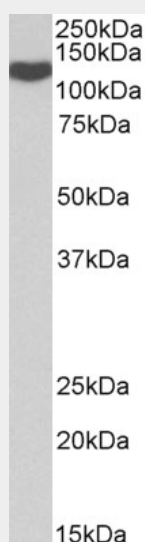
Tissue Location

Expressed in many normal organ tissues and several cancer cell lines

ADAM19 Antibody (internal region) - Protocols

Provided below are standard protocols that you may find useful for product applications.

- [Western Blot](#)
- [Blocking Peptides](#)
- [Dot Blot](#)
- [Immunohistochemistry](#)
- [Immunofluorescence](#)
- [Immunoprecipitation](#)
- [Flow Cytometry](#)
- [Cell Culture](#)

ADAM19 Antibody (internal region) - Images

AF4061a (0.1 µg/ml) staining of Spleen lysate (35 µg protein in RIPA buffer). Primary incubation was 1 hour. Detected by chemiluminescence.

ADAM19 Antibody (internal region) - References

The (pro)renin receptor is cleaved by ADAM19 in the Golgi leading to its secretion into extracellular space. Yoshikawa A, Aizaki Y, Kusano K, Kishi F, Susumu T, Iida S, Ishiura S, Nishimura S, Shichiri M, Senbonmatsu T. Hypertension research : official journal of the Japanese Society of Hypertension 2011 May 34 (5): 599-605. PMID: 21270819